

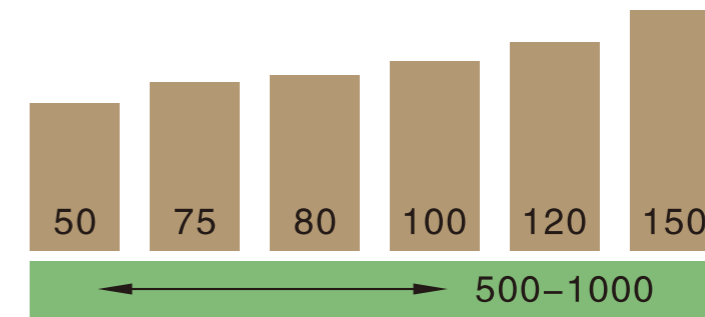
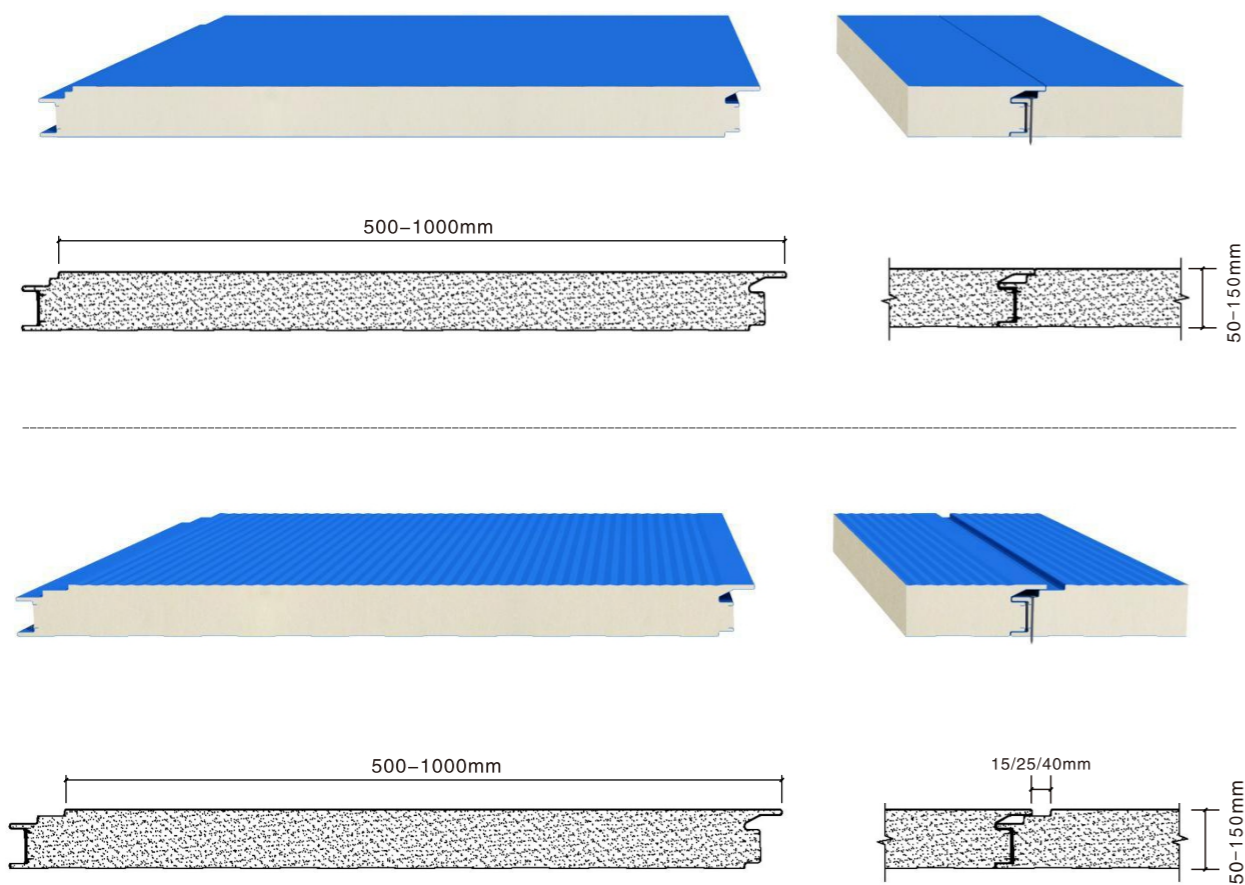
# PUR/PIR Exterior Wall Sandwich Panel

## Product Introduction

PNS brand PUR/PIR building exterior wall sandwich panels include 2 kinds : 1) with decorative gaps; 2) without decorative gaps.

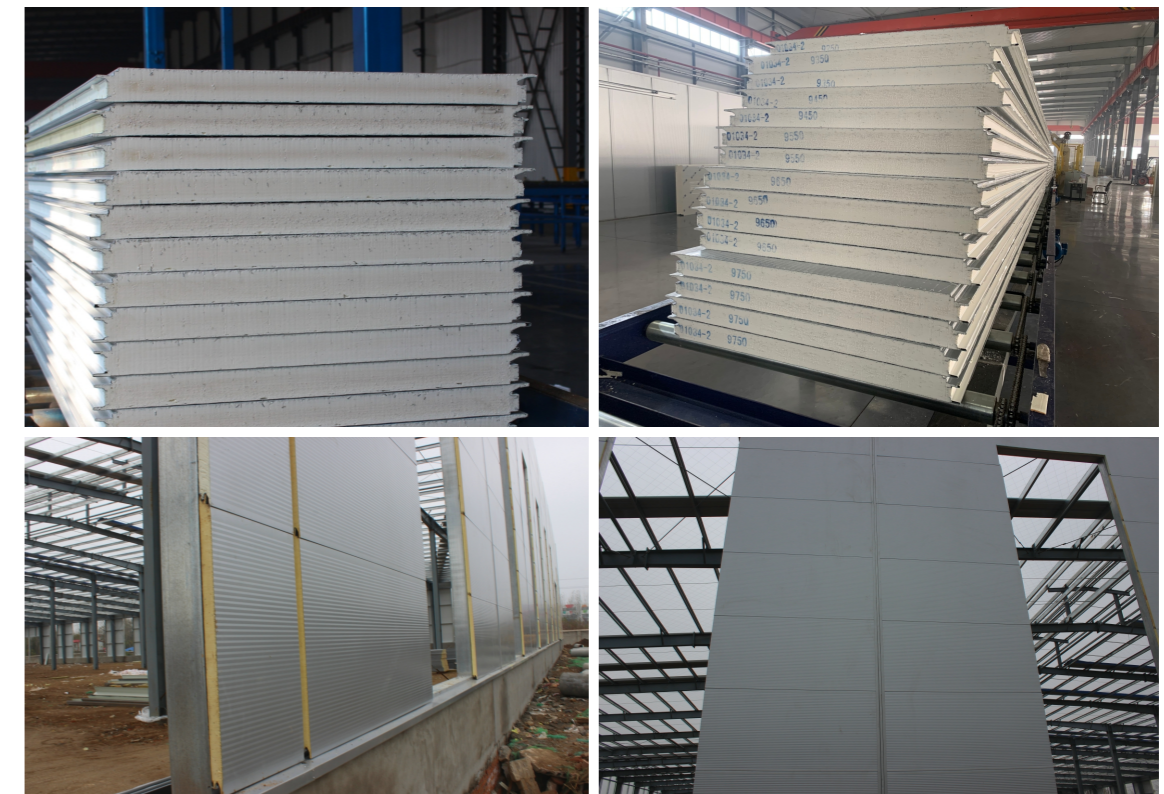
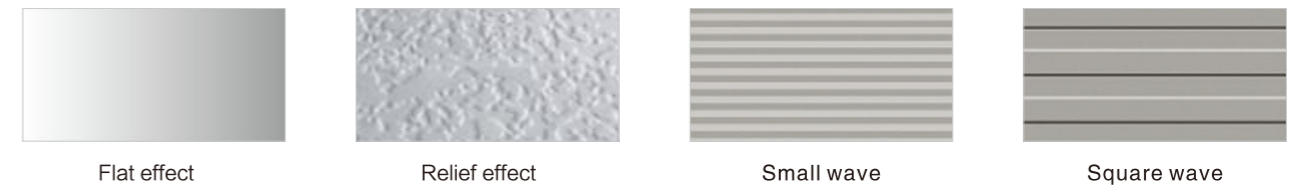
The outer wall sandwich panel with seam is mainly suitable for horizontal installation of the outer wall, and the panel' seam can be adjusted. The seamless building exterior wall panel is suitable for vertical or horizontal exterior walls. The scientific node design can effectively prevent the rainwater leakage of the vertical panel.

The wall panel is connected to the purlin by self-tapping screws, and is plug-in connected.



Optional sandwich panel' thickness and effective width

## Panel appearance





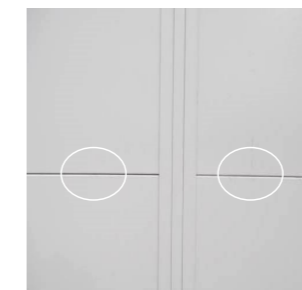
Product Name	PUR Exterior Wall Sandwich Panel	PIR Exterior Wall Sandwich Panel
Model	WL500-1000/PUR	WL500-1000/PIR
Metal sheet (0.4-0.8mm)	1) color pre-painted galvanized steel sheet 2) Aluminium zinc sheet 3) stainless steel sheet 4) Aluminum Magnesium Manganese sheet	
Thickness	50/75/80/100/120/150mm	
Effective width	500-1000mm (Regular 1000mm)	
Length of panel	≤ 11.8 meters	
Core material	PU/PUR (Polyurethane)	PIR ( polyisocyanurate )
Density	40~42 KG/M <sup>3</sup>	45~50 KG/M <sup>3</sup>
Thermal conductivity (25°C)	≤0.022/(m.k)	≤0.0195w/(m.k)
Heat-resistance range	-185°C ~ 110°C ( PUR foam)	-196°C ~ 205°C(PIR foam)
	Long-term continuous use below 85°C(PUR sandwich panel)	Long-term continuous use below 150°C(PIR sandwich panel)
Closed cell rate	≥ 97%	≥ 97%
Compression strength	185 Kpa	220 Kpa
Water absorption rate	2.5-3%	up to 0.9%
Fireproof grade	B2	B1
Combustion performance	≥D	≥ B
Color of steel plate	White grey,silver gray,sea-blue,crimson or as per RAL	
Exterior / Interior surface profile	Flat,Relief,Small wave, Square wave	
Painting	Polyester PE/SMP/HDP/PVDF coating etc.	
Installation method	1. horizontal	2. vertical
Joint type	Plug in type hidden screw mounted	



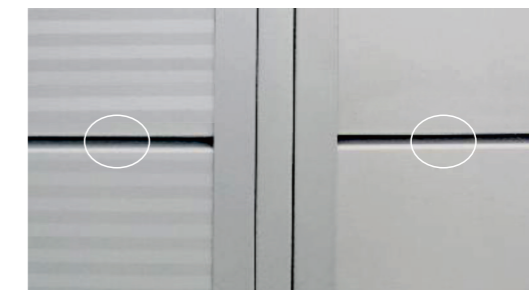
Horizontal installation of exterior wall panels



vertical installation of exterior wall panels



Horizontal installation without decorative seam



Horizontal installation with decorative seam

Allowable span and heat transfer coefficient of PNS' polyurethane sandwich wall panel (allowable deflection  $f \leq L/200$ )

Thickness of pane	Heat Conductivity	Weight	Load capacity					
				0.60	0.80	1.00	1.20	1.50
mm	W/M <sup>2</sup> K	kg/m <sup>2</sup>	P=KN/m <sup>2</sup>					
50	0.31	10.06	L(m)	3.52	3.04	2.69	2.42	2.11
75	0.21	11.06	L(m)	4.71	4.09	3.64	3.29	2.89
100	0.19	12.05	L(m)	5.76	5.02	4.47	4.05	3.56
120	0.16	12.84	L(m)	6.53	5.68	5.07	4.6	4.04
150	0.11	14.04	L(m)	7.56	6.58	5.87	5.32	4.68

